

## IGF2 Antibody

**Subcategory:** Rabbit Polyclonal Antibody

**Cat. No.:** 250711

**Unit:** 0.1 mg

**Description:**

Insulin-like Growth Factors IGF1 and IGF2 share 76% sequence identity and are 50% related to pro-insulin. They are non-glycosylated, single-chain proteins of 70 and 76 amino acids in length respectively. IGF1 functions as an autocrine regulator of growth in various tissues, whereas IGF2 is found in placenta. Defects in IGF1 are the cause of insulin-like growth factor I deficiency defined by growth retardation, sensorineural deafness and mental retardation.

**Isotype:** Rabbit Ig

**Applications:** E, IHC, IP, WB

**Species Reactivity:** H, M, R

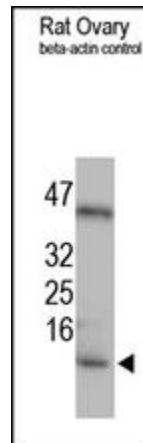
**Format:** Each vial contains 0.1 mg IgG in 0.1 ml (1 mg/ml) of PBS pH7.4 with 0.09% sodium azide. Antibody was purified by Protein-G affinity chromatography.

**Alternate Names:** Insulin-like growth factor II; IGF-II; somatomedin A; IGF2

**Accession No.:** P01344

**Antigen:** KLH-conjugated synthetic peptide encompassing a sequence within the N-term region of human IGF2.

**Application Notes:** E: 1:500-1:1,000; WB: 1:200-1:500; IHC: 1:200-1:500



**The IGF2 Antibody is used in Western blot to detect IGF2 in rat ovary tissue lysate.**

**Storage:** Store at -20°C. Minimize freeze-thaw cycles. Product is guaranteed one year from the date of shipment.

**Product Citations:** [1] Malempati et al. 2012. American Society of Clinical Oncology. Journal of Clinical Oncology. 30(3): 256-262. PMID# 2218473. [2] Matsumoto A et al. 2011. Biomedical and Life Sciences. In Vitro Cellular & Developmental Biology-Animal. 47(9):675-680. PMID# 21959847.

For research use only, not for diagnostic or therapeutic procedures.