

IFN-gamma Antibody

Subcategory: Rabbit Polyclonal Antibody

Cat. No.: 250707

Unit: 0.1 mg

Description:

Interferon-gamma (IFN-gamma) is produced by lymphocytes activated by specific antigens or mitogens. IFN-gamma, in addition to having antiviral activity, has important immunoregulatory functions. IFN-gamma is a potent activator of macrophages and has antiproliferative effects on transformed cells. It can potentiate the antiviral and antitumor effects of the type I interferons. In Caucasians, genetic variation in IFN-gamma is associated with the risk of aplastic anemia, a rare disease in which the reduction of the circulating blood cells results from damage to the stem cell pool in the bone marrow. IFN-gamma (Actimmune, Genentech) is used for reducing the frequency and severity of serious infections associated with chronic granulomatous disease.

Isotype: Rabbit Ig

Applications: E, IHC, WB

Species Reactivity: H

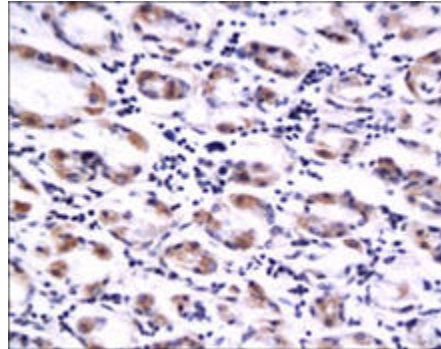
Format: Each vial contains 0.1 mg IgG in 0.1 ml (1 mg/ml) of PBS pH7.4 with 0.09% sodium azide. Antibody was purified by Protein-G affinity chromatography.

Alternate Names: Interferon gamma; IFN-gamma; Immune interferon; IFNG

Accession No.: P01579

Antigen: KLH-conjugated synthetic peptide encompassing a sequence within the C-term region of human IFN-gamma.

Application Notes: Product Cat. No. 250707 does not react with mouse and rat IFN-gamma. E: 1:500-1:1,000; WB: 1:200-1:500; IHC: 1:200-1:500



Interferon-gamma (IFN-gamma) staining in human esophageal cancer. Paraffin-embedded human esophageal cancer is stained with IFN-gamma antibody (Cat. No. 250707) used at 1:200 dilution.

Storage: Store at -20°C. Minimize freeze-thaw cycles. Product is guaranteed one year from the date of shipment.

For research use only, not for diagnostic or therapeutic procedures.