

## HPV16-E7 protein Antibody

**Subcategory:** Rabbit Polyclonal Antibody

**Cat. No.:** 250629

**Unit:** 0.1 mg

**Description:**

E7 protein of human papillomavirus type 16 (HPV16) is mainly used for research on sexually-transmitted diseases and gynecology tumors. The HPV16 is the main cancer-causing virus of the head and neck cancer. E7 protein has transforming and trans-activating activities that are known to disrupt the function of host retinoblastoma protein (Rb1). HPV16, in comparison to HPV types 6 and 11, is more often associated with malignant genital cancers in humans.

**Isotype:** Rabbit Ig

**Applications:** E, IHC, WB

**Species Reactivity:** H

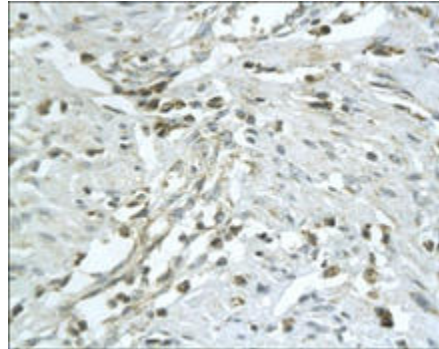
**Format:** Each vial contains 0.1 mg IgG in 0.1 ml (1 mg/ml) of PBS pH7.4, 0.1 mg/ml BSA, 50% glycerol with 0.09% sodium azide. Antibody was purified by Protein-A and immunogen affinity chromatography.

**Alternate Names:** Protein E7; Protein E6; Human papillomavirus type 16; HPV16

**Accession No.:** P03129, P03126

**Antigen:** KLH-conjugated synthetic peptide encompassing a sequence within the center region of HPV16-E7 protein.

**Application Notes:** Cat. No. 250629 recognizes E6 and E7 proteins from HPV16. E: 1:500-1:1,000; WB: 1:200-1:500; IHC: 1:200-1:500



**HPV16-E7 protein staining in human uterine cancer. Paraffin-embedded human uterine cancer is stained with HPV16-E7 Antibody (Cat. No. 250629) used at 1:200 dilution.**

**Storage:** Store at -20°C. Minimize freeze-thaw cycles. Product is guaranteed one year from the date of shipment.

**Product Citations:** [1] Maione F et al. 2012. The Journal of Clinical Investigation. 122(5): 1832-1848. PMID# 22484816. [2] Srivastava U et al. 2012. International Journal of Pharmaceutical Sciences Review and Research. 14(2),16:98-101.

For research use only, not for diagnostic or therapeutic procedures.