

HMGB1 Antibody

Subcategory: Rabbit Polyclonal Antibody

Cat. No.: 250508

Unit: 0.1 mg

Description:

The HMG (high mobility group) proteins are nonhistone chromosomal proteins. High mobility group protein B1 (HMGB1) is an abundant component of all mammalian nuclei. HMGB1 binds preferentially single-stranded DNA and unwinds double-stranded DNA.

Isotype: Rabbit Ig

Applications: E, WB, IHC

Species Reactivity: H, M, R

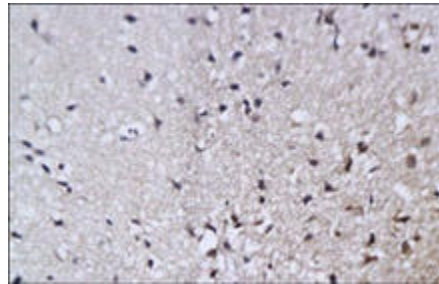
Format: Each vial contains 0.1 mg IgG in 0.1 ml (1 mg/ml) of PBS pH7.4 with 0.09% sodium azide. Antibody was purified by Protein-G affinity chromatography.

Alternate Names: High mobility group protein B1; High mobility group protein 1; HMG-1; HMGB1; HMG1

Accession No.: P09429

Antigen: KLH-conjugated synthetic peptide encompassing a sequence within the center region of human HMGB1.

Application Notes: E: 1:500-1:1,000; WB: 1:200-1:500; IHC: 1:200-1:500



HMGB1 (high mobility group protein B1) staining in rat brain. Paraffin-embedded rat brain was stained with HMGB1 Antibody (Cat. No. 250508) used at 1:200 dilution.

Storage: Store at -20°C. Minimize freeze-thaw cycles. Product is guaranteed one year from the date of shipment.

For research use only, not for diagnostic or therapeutic procedures.