

HLA-G Antibody

Subcategory: Rabbit Polyclonal Antibody

Cat. No.: 251266

Unit: 0.1 mg

Description:

Human leukocyte antigen-G (HLA-G) is involved in the presentation of foreign antigens to the immune system. HLA-G plays a role in maternal tolerance of the fetus by mediating protection from the deleterious effects of natural killer cells, cytotoxic T lymphocytes, macrophages and mononuclear cells.

Isotype: Rabbit Ig

Applications: E, IHC, WB

Species Reactivity: H

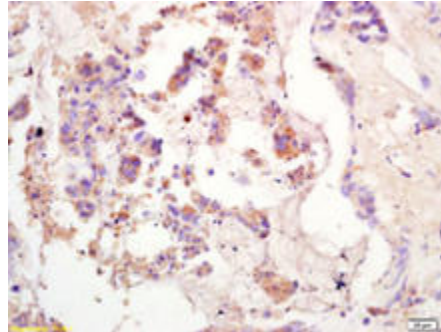
Format: Each vial contains 0.1 mg IgG in 0.1 ml (1 mg/ml) of PBS pH7.4, 25% glycerol, 5 mg/ml BSA with 0.09% sodium azide. Antibody was purified by Protein-A affinity chromatography.

Alternate Names: HLA-G; Human leukocyte antigen-G; HLA class I histocompatibility antigen, alpha chain G; HLA G antigen; HLA-6.0, HLAG

Accession No.: P17693

Antigen: KLH-conjugated synthetic peptide encompassing a sequence within human HLA-G.

Application Notes: E: 1:500-1:1,000; WB: 1:100-1:500; IHC: 1:100-1:500



HLA-G staining in human colon cancer. Formalin-fixed paraffin-embedded human colon carcinoma tissue is stained with HLA-G Antibody (Cat. No. 251266) used at 1:200 dilution.

Storage: Store at -20°C. Minimize freeze-thaw cycles. Product is guaranteed one year from the date of shipment.

For research use only, not for diagnostic or therapeutic procedures.