

## HLA-DR Antibody

**Subcategory:** Rabbit Polyclonal Antibody

**Cat. No.:** 251566

**Unit:** 0.1 mg

**Description:**

HLA class II histocompatibility antigen (HLA-DR) binds peptides derived from antigens that access the endocytic route of antigen presenting cells (APC) and presents them on the cell surface for recognition by CD4 T-cells. HLA-DR is a heterodimer of an alpha and a beta subunit; also referred as MHC class II molecule. The peptides presented by HLA-DR and other MHC class II molecules are generated mostly by degradation of proteins that access the endocytic route, where they are processed by lysosomal proteases and other hydrolases.

**Isotype:** Rabbit Ig

**Applications:** E, WB, IHC

**Species Reactivity:** H

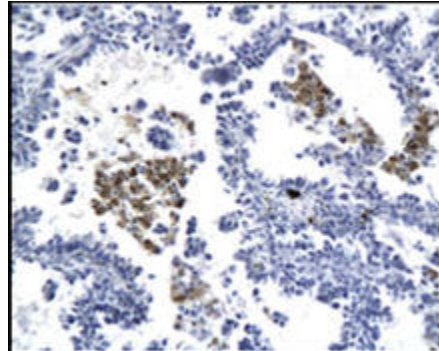
**Format:** Each vial contains 0.1 mg IgG in 0.1 ml (1 mg/ml) of PBS pH7.4 with 0.09% sodium azide. Antibody was purified by Protein-G affinity chromatography.

**Alternate Names:** HLA class II histocompatibility antigen; DRB1-13 beta chain; MHC class II antigen DRB1-13; HLA-DRB1; DR-13; DR alpha chain; MHC class II antigen DRA; HLA-DRA; HLA-DRA1; HLADR

**Accession No.:** P01903

**Antigen:** KLH-conjugated synthetic peptide encompassing a sequence within the N-term region of human HLA-DR.

**Application Notes:** E: 1:500-1:1,000; WB: 1:100-1:500; IHC: 1:100-1:500



**HLA-DR staining in lung cancer: Paraffin-embedded human lung cancer tissue is stained with HLA-DR Antibody (Cat. No. 251566) used at 1:200 dilution.**

**Storage:** Store at -20°C. Minimize freeze-thaw cycles. Product is guaranteed one year from the date of shipment.

For research use only, not for diagnostic or therapeutic procedures.