

HIF-1 alpha Antibody

Subcategory: Rabbit Polyclonal Antibody

Cat. No.: 251256

Unit: 0.1 mg

Description:

Hypoxia-inducible factor 1-alpha (HIF-1 alpha) functions as a master transcriptional regulator of the adaptive response to hypoxia. Under hypoxic conditions, HIF-1 alpha activates the transcription of over 40 genes, including, erythropoietin, glucose transporters, glycolytic enzymes, vascular endothelial growth factor, and other genes whose protein products increase oxygen delivery or facilitate metabolic adaptation to hypoxia. HIF-1 alpha plays an essential role in embryonic vascularization, tumor angiogenesis and pathophysiology of ischemic disease. HIF-1 alpha binds to core DNA sequence 5'-[AG]CGTG-3' within the hypoxia response element (HRE) of target gene promoters.

Isotype: Rabbit Ig

Applications: E, IHC, WB

Species Reactivity: B, Ck, D, H, M, P, R

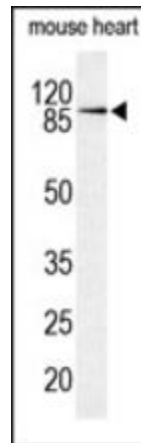
Format: Each vial contains 0.1 mg IgG in 0.1 ml (1 mg/ml) of PBS pH7.4 with 0.09% sodium azide. Antibody was purified by Protein-G affinity chromatography.

Alternate Names: Hypoxia-inducible factor 1 alpha; HIF-1 alpha; HIF1 alpha; ARNT-interacting protein; Member of PAS protein 1; Basic-helix-loop-helix-PAS protein MOP1; HIF1A; MOP1

Accession No.: Q16665

Antigen: KLH-conjugated synthetic peptide encompassing a sequence within the center region of human HIF-1 alpha.

Application Notes: E: 1:500-1:1,000; WB: 1:100-1:500; IHC: 1:100-1:500



The HIF-1 alpha Antibody (Cat. No. 251256) is used in Western blot to detect HIF-1 alpha in mouse heart tissue lysate.

Storage: Store at -20°C. Minimize freeze-thaw cycles. Product is guaranteed one year from the date of shipment.

For research use only, not for diagnostic or therapeutic procedures.