

HES-1 Antibody

Subcategory: Rabbit Polyclonal Antibody

Cat. No.: 252142

Unit: 0.1 mg

Description:

Transcription factor HES-1 (HES-1) is a transcriptional repressor of genes that require a bHLH protein for their transcription. HES-1 acts as a negative regulator of myogenesis by inhibiting the functions of MYOD1 and ASH1. HES-1 binds DNA on N-box motifs: 5'-CACNAG-3' with high affinity and on E-box motifs: 5'-CANNTG-3' with low affinity.

Isotype: Rabbit Ig

Applications: E, WB, IHC

Species Reactivity: H, M, R

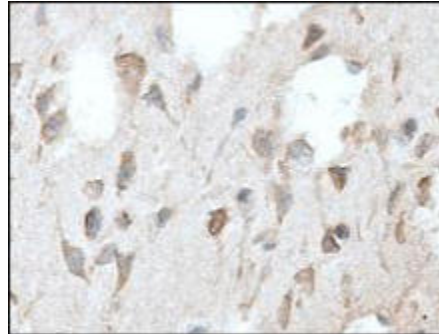
Format: Each vial contains 0.1 mg IgG in 0.1 ml (1 mg/ml) of PBS pH7.4, 0.5% BSA with 0.09% sodium azide. Antibody was purified by immunogen affinity chromatography.

Alternate Names: Transcription factor HES-1; Hairy and enhancer of split 1; Hairy-like protein; hHL; Hairy homolog; Class B basic helix-loop-helix protein 39; bHLHb39; HES1; BHLHB39; HL; HRY

Accession No.: Q14469

Antigen: KLH-conjugated synthetic peptide encompassing a sequence within the N-term region of human HES-1.

Application Notes: E: 1:10,000-1:50,000; WB: 1:100-1:1,000; IHC: 1:50-1:500



HES-1 staining in human brain. Paraffin-embedded human brain is stained with HES-1 Antibody (Cat. No. 252142) used at 1:100 dilution.

Storage: Store at -20°C. Minimize freeze-thaw cycles. Product is guaranteed one year from the date of shipment.

For research use only, not for diagnostic or therapeutic procedures.