

HERG Antibody

Subcategory: Rabbit Polyclonal Antibody

Cat. No.: 252174

Unit: 0.1 mg

Description:

Potassium voltage-gated channel subfamily H member 2 (HERG) is the pore-forming (alpha) subunit of voltage-gated inwardly rectifying potassium channel. The HERG channel properties are modulated by cAMP and subunit assembly. HERG mediates the rapidly activating component of the delayed rectifying potassium current in heart (IKr). Isoform 3 has no channel activity by itself, but modulates channel characteristics when associated with isoform 1. Defects in HERG are the cause of long QT syndrome type 2 (LQT2). Long QT syndromes are heart disorders characterized by a prolonged QT interval on the ECG and polymorphic ventricular arrhythmias. They cause syncope and sudden death in response to exercise or emotional stress.

Isotype: Rabbit Ig

Applications: E, WB, IHC

Species Reactivity: H, M, R

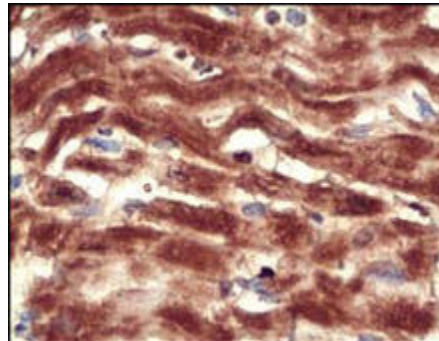
Format: Each vial contains 0.1 mg IgG in 0.1 ml (1 mg/ml) of PBS pH7.4 with 0.09% sodium azide. Antibody was purified by immunogen-affinity chromatography.

Alternate Names: Potassium voltage-gated channel subfamily H member 2; Voltage-gated potassium channel subunit Kv11.1; Ether-a-go-go-related gene potassium channel 1; Ether-a-go-go-related protein 1; Eag-related protein 1; ERG-1; hERG-1; hERG1; H-ERG; Eag homolog; KCNH2; ERG; ERG1; HERG

Accession No.: Q12809

Antigen: KLH-conjugated synthetic peptide encompassing a sequence within the center region of human HERG.

Application Notes: E: 1:1,000-1:10,000; WB: 1:100-1:500; IHC: 1:100-1:500



HERG staining in human heart. Paraffin-embedded human heart is stained with HERG Antibody (Cat. No. 252174) used at 1:200 dilution.

Storage: Store at -20°C. Minimize freeze-thaw cycles. Product is guaranteed one year from the date of shipment.

For research use only, not for diagnostic or therapeutic procedures.