

HER-2 (9B9D) Antibody

Subcategory: Mouse Monoclonal Antibody

Cat. No.: 252700

Unit: 0.1 ml

Description:

C-erbB-2 (HER2) is a member of the epidermal growth factor (EGF) receptor family of receptor tyrosine kinases. HER2 has no ligand binding domain, therefore cannot bind growth factors. However, HER2 does bind tightly to other ligand-bound EGF receptor family members to form a heterodimer, stabilizing ligand binding and enhancing kinase-mediated activation of downstream signalling pathways, such as those involving mitogen-activated protein kinase and phosphatidylinositol-3 kinase.

Isotype: Mouse IgG2b

Applications: E, IHC, WB

Species Reactivity: H

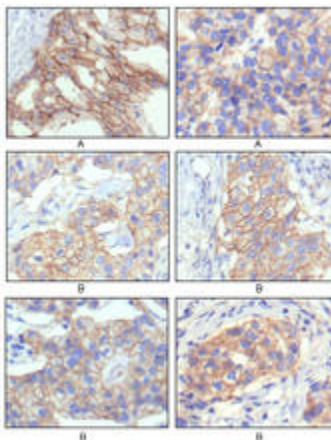
Format: Each vial contains 0.1 ml ascitic fluid with 0.03% sodium azide.

Alternate Names: Receptor tyrosine protein kinase erbB2; p185erbB2; C-erbB-2; Neu proto-oncogene; Tyrosine kinase-type cell surface receptor HER2; MLN 19; ERBB2; HER2; NEU; NGL

Accession No.: P04626

Antigen: Purified recombinant fragment of human ERBB2 (aa750-987) expressed in *E. coli*.

Application Notes: E: 1:5000-1:10000; WB: 1:500-1:2000; IHC: 1:200-1:1000



Immunohistochemical analysis of paraffin-embedded human breast intraductal carcinoma tissue (A), and breast-infiltrating ductal carcinoma tissue (B), showing membrane localization using HER-2 (9B9D) Antibody (Cat. No. 252700) with DAB staining.

Storage: Store at 4°C for short term use only. Store at -20°C for storage over 1 month. Product is guaranteed 6 months from the date of shipment.

For research use only, not for diagnostic or therapeutic procedures.