

## HDAC1 Antibody

**Subcategory:** Rabbit Polyclonal Antibody

**Cat. No.:** 252125

**Unit:** 0.1 mg

**Description:**

Histone deacetylase 1 (HDAC1) is responsible for the deacetylation of lysine residues on the N-terminal part of the core histones (H2A, H2B, H3 and H4). Histone deacetylation plays a crucial role in transcriptional regulation, cell cycle progression and developmental events. Histone deacetylases act via the formation of large multiprotein complexes. HDAC1 is sumoylated on Lys-444 and Lys-476, which promotes enzymatic activity.

**Isotype:** Rabbit Ig

**Applications:** E, WB

**Species Reactivity:** H, M, R

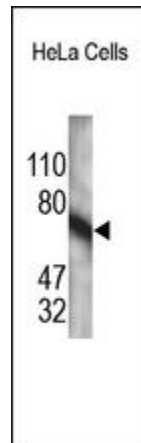
**Format:** Each vial contains 0.1 mL of crude serum with 0.09% sodium azide.

**Alternate Names:** Histone deacetylase 1; HD1; HDAC1; RPD3L1

**Accession No.:** Q13547

**Antigen:** KLH-conjugated synthetic peptide encompassing a sequence within the center region of human HDAC1.

**Application Notes:** E: 1:10,000-1:50,000; WB: 1:100-1:1,000



**The HDAC1 Antibody is used in Western blot to detect HDAC1 in HeLa cell lysates.**

**Storage:** Store at -20°C. Minimize freeze-thaw cycles. Product is guaranteed one year from the date of shipment.

For research use only, not for diagnostic or therapeutic procedures.