

HCV-Core Antibody

Subcategory: Rabbit Polyclonal Antibody

Cat. No.: 250683

Unit: 0.1 mg

Description:

The p21 core protein from Hepatitis C virus (HCV) packages viral RNA to form a viral nucleocapsid and promotes virion budding. p21 modulates viral translation initiation and regulates many host cellular activities by interacting with HCV IRES and 40S ribosomal subunit. p21 also regulates host cellular functions that prevent the establishment of cellular antiviral state by blocking the interferon-alpha/beta (IFN-alpha/beta) and IFN-gamma signaling pathways and by inducing human STAT1 degradation. p21 plays an important role in the virus-mediated cell transformation leading to hepatocellular carcinomas.

Isotype: Rabbit Ig

Applications: E, WB, IHC

Species Reactivity: Vs

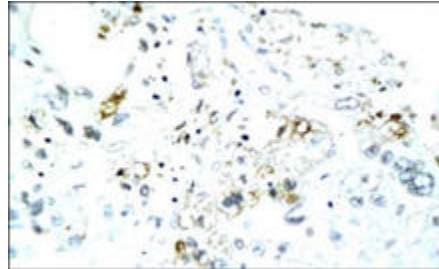
Format: Each vial contains 0.1 mg IgG in 0.1 ml (1 mg/ml) of PBS pH7.4 with 0.09% sodium azide. Antibody was purified by Protein-G affinity chromatography.

Alternate Names: Genome polyprotein Hepatitis C virus; Core protein p21; Core protein p19; HCV Capsid protein C

Accession No.: P26664

Antigen: KLH-conjugated synthetic peptide encompassing a sequence within the N-term region of HCV p21 core protein.

Application Notes: E: 1:500-1:1,000; WB: 1:200-1:500; IHC: 1:200-1:500



HCV-Core staining in human liver. Paraffin-embedded human liver is stained with HCV-Core Antibody (Cat. No. 250683) used at 1:200 dilution.

Storage: Store at -20°C. Minimize freeze-thaw cycles. Product is guaranteed one year from the date of shipment.

For research use only, not for diagnostic or therapeutic procedures.