

HCLS1 Antibody

Subcategory: Rabbit Polyclonal Antibody

Cat. No.: 252104

Unit: 0.1 mg

Description:

Hematopoietic lineage cell-specific protein (HCLS1) is a substrate of the antigen receptor-coupled tyrosine kinase. HCLS1 plays a role in antigen receptor signaling for both clonal expansion and deletion in lymphoid cells. HCLS1 is involved in the regulation of gene expression. HCLS1 associates with the SH2 and SH3 domains of LCK. Binding to the LCK SH3 domain occurs constitutively, while binding to the LCK SH2 domain occurs only upon TCR stimulation.

Isotype: Rabbit Ig

Applications: E, WB, IHC

Species Reactivity: H, M, R

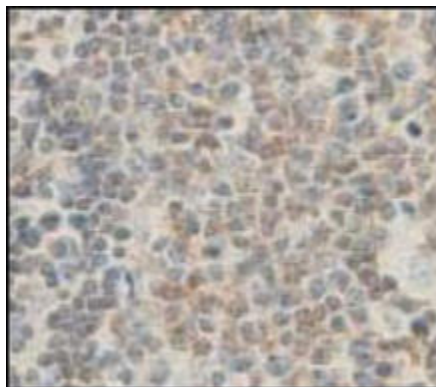
Format: Each vial contains 0.1 mg IgG in 0.1 ml (1 mg/ml) of PBS pH7.4, 2% BSA with 0.09% sodium azide. Antibody was purified by Protein-G affinity chromatography.

Alternate Names: Hematopoietic lineage cell-specific protein; Hematopoietic cell-specific LYN substrate 1; LckBP1; p75; HCLS1; HS1

Accession No.: P14317

Antigen: KLH-conjugated synthetic peptide encompassing a sequence within the C-term region of human HCLS1.

Application Notes: E: 1:10,000-1:50,000; WB: 1:200-1:1,000; IHC: 1:50-1:200



HCLS1 staining in human fetal tonsil. Paraffin-embedded human fetal tonsil is stained with HCLS1 Antibody (Cat. No. 252104) used at 1:100 dilution.

Storage: Store at -20°C. Minimize freeze-thaw cycles. Product is guaranteed one year from the date of shipment.

For research use only, not for diagnostic or therapeutic procedures.