

GRP Antibody

Subcategory: Rabbit Polyclonal Antibody

Cat. No.: 250676

Unit: 0.1 mg

Description:

The gastrin-releasing peptide (GRP), a member of the bombesin-like family, stimulates the release of gastrin and gastrointestinal hormones. GRP is also involved in smooth muscle cell contraction and epithelial cell proliferation. GRP is a 27-aa peptide released from a preproprotein form that is also a precursor for neuromedin-C.

Isotype: Rabbit Ig

Applications: E, IHC, WB

Species Reactivity: H, M, R

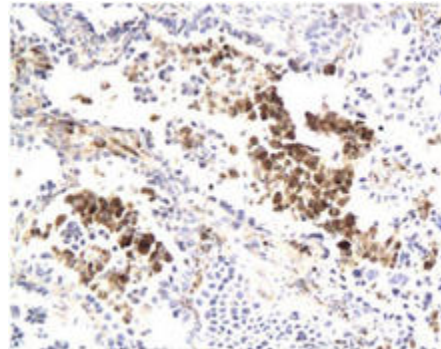
Format: Each vial contains 0.1 mg IgG in 0.1 ml (1 mg/ml) of PBS pH7.4, 0.1 mg/ml BSA, 25% glycerol with 0.09% sodium azide. Antibody was purified by immunogen affinity chromatography.

Alternate Names: Gastrin-releasing peptide; GRP; neuromedin-C

Accession No.: P07492

Antigen: KLH-conjugated synthetic peptide encompassing a sequence within the human GRP.

Application Notes: E: 1:500-1:1,000; WB: 1:200-1:500; IHC: 1:200-1:500



GRP staining in human lung cancer. Paraffin-embedded human lung cancer tissue is stained with GRP Antibody (Cat. No. 250676) used at 1:200 dilution.

Storage: Store at -20°C. Minimize freeze-thaw cycles. Product is guaranteed one year from the date of shipment.

For research use only, not for diagnostic or therapeutic procedures.