

GRO-alpha Antibody

Subcategory: Rabbit Polyclonal Antibody

Cat. No.: 251349

Unit: 0.1 mg

Description:

GRO-alpha has chemotactic activity for neutrophils, plays a role in inflammation, and exerts its effects on endothelial cells in an autocrine fashion. In vitro, the processed forms GRO-alpha (4-73), GRO-alpha(5-73) and GRO-alpha(6-73) show a 30-fold higher chemotactic activity.

Isotype: Rabbit Ig

Applications: E, WB, IHC

Species Reactivity: H, M, R

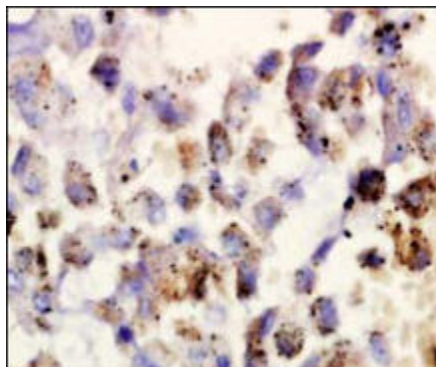
Format: Each vial contains 0.1 mg IgG in 0.1 ml (1 mg/ml) of PBS pH7.4 with 0.09% sodium azide. Antibody was purified by Protein-G affinity chromatography.

Alternate Names: GRO-alpha; GRO alpha; GRO?; GRO; MGSA; CXCL1 protein; Growth-regulated alpha protein; C-X-C motif chemokine 1; Melanoma growth stimulatory activity; Neutrophil-activating protein 3; NAP-3; GRO-alpha(1-73); CINC-1

Accession No.: P09341

Antigen: KLH-conjugated synthetic peptide encompassing a sequence within the N-term region of human GRO-alpha.

Application Notes: E: 1:500-1:1,000; WB: 1:100-1:500; IHC: 1:100-1:500



GRO-alpha staining in human lung cancer: Paraffin-embedded human lung cancer tissue is stained with GRO-alpha Antibody (Cat. No. 251349) used at 1:200 dilution.

Storage: Store at -20°C. Minimize freeze-thaw cycles. Product is guaranteed one year from the date of shipment.

For research use only, not for diagnostic or therapeutic procedures.