

AIF Antibody

Subcategory: Rabbit Polyclonal Antibody

Cat. No.: 252011

Unit: 0.1 mg

Description:

Apoptosis-inducing factor 1, mitochondrial (AIF) is an oxidoreductase that has a dual role in controlling cellular life and death. During apoptosis, AIF is translocated from the mitochondria to the nucleus to function as a proapoptotic factor in a caspase-independent pathway, while in normal mitochondria, it functions as an antiapoptotic factor via its oxidoreductase activity. The soluble form (AIFsol) found in the nucleus induces 'parthanatos' i.e., caspase-independent fragmentation of chromosomal DNA. AIF interacts with EIF3G, and thereby inhibits the EIF3 machinery and protein synthesis, and activates caspase-7 to amplify apoptosis. Defects in AIF are the cause of combined oxidative phosphorylation deficiency type 6 (COXPD6). AIF is a mitochondrial disease resulting in a neurodegenerative disorder characterized by psychomotor delay, hypotonia, areflexia, muscle weakness and wasting.

Isotype: Rabbit Ig

Applications: E, WB

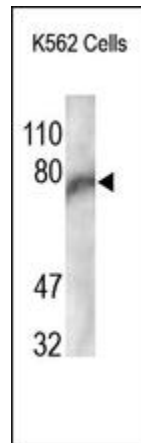
Species Reactivity: H

Format: Each vial contains 0.1 mL of crude serum with 0.09% sodium azide.

Accession No.: P42773

Antigen: KLH-conjugated synthetic peptide encompassing a sequence within the C-term region of human AIF.

Application Notes: E: 1:10,000-1:50,000; WB: 1:100-1:1,000



The AIF Antibody is used in Western blot to detect AIF in K562 cells.

Storage: Store at -20°C. Minimize freeze-thaw cycles. Product is guaranteed one year from the date of shipment.

For research use only, not for diagnostic or therapeutic procedures.