

AGTR1 Antibody

Subcategory: Rabbit Polyclonal Antibody

Cat. No.: 250926

Unit: 0.1 mg

Description:

Type-1 angiotensin II receptor (AGTR1), a receptor for angiotensin II, activates the phosphatidylinositol-calcium second messenger system upon interacting with G proteins. Defects in AGTR1 are a cause of renal tubular dysgenesis (RTD), a severe disorder of renal tubular development.

Isotype: Rabbit Ig

Applications: E, IHC, WB

Species Reactivity: D, H, M, R

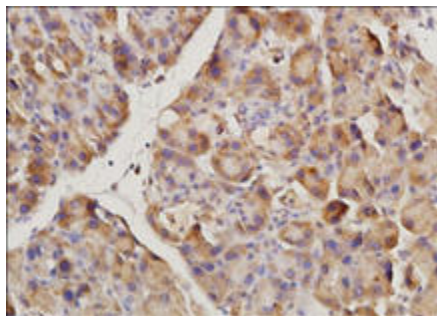
Format: Each vial contains 0.1 mg IgG in 0.1 ml (1 mg/ml) of PBS pH7.4 with 0.09% sodium azide. Antibody was purified by Protein-G affinity chromatography.

Alternate Names: Type-1 angiotensin II receptor; AT1; AT1AR; AT1BR; AGTR1; AGTR1A; AGTR1B; AT2R1; AT2R1B

Accession No.: P25095

Antigen: KLH-conjugated synthetic peptide encompassing a sequence within the center region of mouse AGTR1.

Application Notes: E: 1:500-1:1,000; WB: 1:200-1:500; IHC: 1:200-1:500



AGTR1 staining in rat pancreas. Paraffin-embedded rat pancreas tissue is stained with AGTR1 Antibody (Cat. No. 250926) used at 1:200 dilution.

Storage: Store at -20°C. Minimize freeze-thaw cycles. Product is guaranteed one year from the date of shipment.

Product Citations: [1] Purushothaman K et al. 2012. Elsevier. Cardiovascular Pathology. 22(1) 42-48. PMID# 22749485. [2] Mateos L et al. Journal of Biological Chemistry. 2011. 286(29): 25574-85. PMID# 21628469. [3] Shang J. et al. 2013. Chin Med J. 126 (17): 3264-3269. PMID# 24033947.

For research use only, not for diagnostic or therapeutic procedures.