

ADRB2 Antibody

Subcategory: Rabbit Polyclonal Antibody

Cat. No.: 251604

Unit: 0.1 mg

Description:

The beta-2 adrenergic receptor is a G-protein coupled adrenergic receptor with 30-fold higher affinity for epinephrine than norepinephrine. Agonist binding to the beta-2 adrenergic receptor initiates signal transduction pathways via activation of adenylyl cyclases. There are numerous physiological effects of beta-2 adrenergic receptor activation, including smooth muscle relaxation, blood vessel dilation, increased heart rate, and insulin secretion. The Gly-16 allele is overrepresented in individuals affected by nocturnal asthma as compared to controls, and appears to be an important genetic factor in the expression of this asthmatic phenotype.

Isotype: Rabbit Ig

Applications: E, IHC, WB

Species Reactivity: Ch, D, GP, H, Mk, M, R

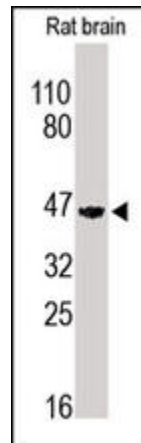
Format: Each vial contains 0.1 mg IgG in 0.1 ml (1 mg/ml) of PBS pH7.4, 25% glycerol, 5 mg/ml BSA with 0.09% sodium azide. Antibody was purified by immunogen affinity chromatography.

Alternate Names: ADRB2; Beta-2 adrenergic receptor; Beta-2 adrenoreceptor; Beta-2 adrenoceptor; ADRB2R; B2AR

Accession No.: P07550

Antigen: KLH-conjugated synthetic peptide encompassing a sequence within the center region of human ADRB2.

Application Notes: E: 1:500-1:1,000; WB: 1:100-1:500; IHC: 1:100-1:500



The ADRB2 Antibody (Cat. No. 251604) is used in Western blot to detect ADRB2 in rat brain tissue lysate.

Storage: Store at -20°C. Minimize freeze-thaw cycles. Product is guaranteed one year from the date of shipment.

Product Citations: Stiles J et al. 2013. PLoS ONE. 8(3):e60021. PMID# 23555867.

For research use only, not for diagnostic or therapeutic procedures.