

ADRA2 Antibody

Subcategory: Rabbit Polyclonal Antibody

Cat. No.: 251433

Unit: 0.1 mg

Description:

Alpha-2 adrenergic receptors (ADRA2) mediate the catecholamine-induced inhibition of adenylate cyclase through the action of G proteins. ADRA2 is involved in a number of physiological responses to agonist activation, including the inhibition of insulin release and stimulation of glucagon release from the pancreas, decreased motility of smooth muscle in the gastrointestinal tract, vasodilation of arteries, and vasoconstriction of veins.

Isotype: Rabbit Ig

Applications: E, IHC, WB

Species Reactivity: B, H, M, P, Rb, R

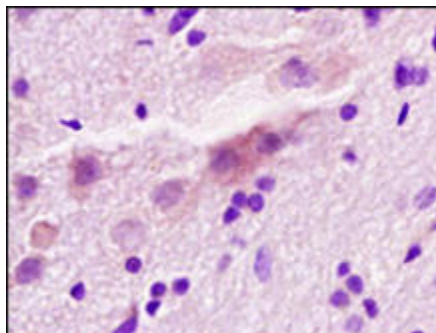
Format: Each vial contains 0.1 mg IgG in 0.1 ml (1 mg/ml) of PBS pH7.4 with 0.09% sodium azide. Antibody was purified by Protein-G affinity chromatography.

Alternate Names: Alpha-2A adrenergic receptor; Alpha-2 adrenergic receptor subtype C10; Alpha-2A; Alpha-2A adrenoceptor; Alpha-2AAR; ADRA2R; ADRAR; ADRA2A

Accession No.: P08913

Antigen: KLH-conjugated synthetic peptide encompassing a sequence within the C-term region of human ADRA2.

Application Notes: E: 1:500-1:1,000; WB: 1:100-1:500; IHC: 1:100-1:500



ADRA2A staining in rat brain. Formalin-fixed paraffin-embedded rat brain is stained with ADRA2A Antibody (Cat. No. 251433) used at 1:200 dilution.

Storage: Store at -20°C. Minimize freeze-thaw cycles. Product is guaranteed one year from the date of shipment.

For research use only, not for diagnostic or therapeutic procedures.