

ADRA1B Antibody

Subcategory: Rabbit Polyclonal Antibody

Cat. No.: 252032

Unit: 0.1 mg

Description:

Adrenergic Receptors (ARs) are members of the 7-transmembrane domain G-protein-coupled receptor superfamily that bind the endogenous catecholamines epinephrine and norepinephrine. Pharmacological, structural, and molecular cloning data indicate significant heterogeneity within this receptor family. Nine receptor subtypes have been identified thus far including three alpha 1 AR subtypes (1A/D, 1B, and 1C), three alpha 2 ARs (2A, 2B, and 2C), and three beta AR subtypes (1, 2, and 3). ARs participate in either the onset or maintenance of several disease states including hypertension, cardiac dysfunction (congestive heart failure, ischemia, arrhythmias), diabetes, glaucoma, depression, and impotence. A1AR subtypes are found in numerous tissues and have been shown to be involved in the regulation of blood pressure due to changes in vascular tone and cardiac output. Effects on uterine contraction, hepatic glucose metabolism, heat shock protein 70 (HSP 70), proto-oncogene expression, and mitogenesis have been linked to A1AR activation. The alpha-1B adrenergic receptor (ADRA1B) mediates its action by association with G proteins that activate a phosphatidylinositol-calcium second messenger system.

Isotype: Rabbit Ig

Applications: E, WB, IHC

Species Reactivity: H

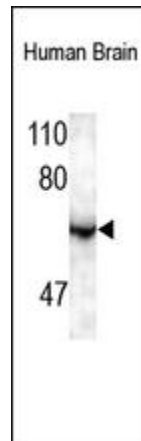
Format: Each vial contains 0.1 mg IgG in 0.1 ml (1 mg/ml) of PBS pH7.4, 1% BSA with 0.09% sodium azide. Antibody was purified by immunogen affinity chromatography.

Alternate Names: Alpha-1B adrenergic receptor; Alpha-1B adrenoreceptor; Alpha-1B adrenoceptor; ADRA1B

Accession No.: P35368

Antigen: KLH-conjugated synthetic peptide encompassing a sequence within the C-term region of human ADRA1B.

Application Notes: E: 1:1,000-1:10,000; WB: 1:200-1:1,000; IHC: 1:100-1:500



The ADRA1B Antibody is used in Western blot to detect ADRA1B in human fetal brain lysates.

Storage: Store at -20°C. Minimize freeze-thaw cycles. Product is guaranteed one year from the date of shipment.

For research use only, not for diagnostic or therapeutic procedures.