

## ADMR Antibody

**Subcategory:** Rabbit Polyclonal Antibody

**Cat. No.:** 250459

**Unit:** 0.1 mg

**Description:**

Adrenomedullin receptor (ADMR) corresponds to the orphan receptor GPR182, a G-protein coupled receptor 1 family, thought to be the receptor for adrenomedullin in human. The ADMR activity is mediated by G proteins which activate adenylate cyclase. ADMR is expressed in a wide variety of peripheral tissues in the adult rat with prominent expression in lung, testis, adrenal, and liver.

**Isotype:** Rabbit Ig

**Applications:** E, IHC, WB

**Species Reactivity:** H, M, R

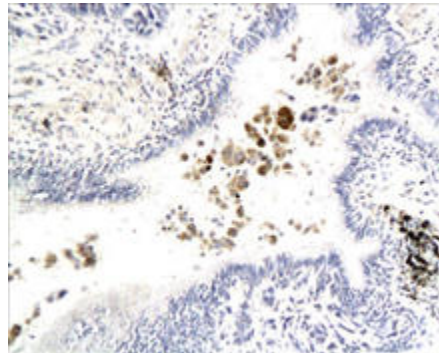
**Format:** Each vial contains 0.1 mg IgG in 0.1 ml (1 mg/ml) of PBS pH7.4 with 0.09% sodium azide. Antibody was purified by Protein-G affinity chromatography.

**Alternate Names:** G-protein coupled receptor 182; GPR182; ADMR

**Accession No.:** O15218

**Antigen:** KLH-conjugated synthetic peptide encompassing a sequence within the N-term region of human ADMR.

**Application Notes:** E: 1:500-1:1,000; WB: 1:100-1:500; IHC: 1:200-1:500



**Paraffin-embedded human lung cancer tissue is stained with ADMR Antibody (Cat. No. 250459) used at a 1:100 dilution.**

**Storage:** Store at -20°C. Minimize freeze-thaw cycles. Product is guaranteed one year from the date of shipment.

**Product Citations:** Zhi LT et al. 2013. Biomed Environ Science. 26(2):118-127. PMID# 23336135

For research use only, not for diagnostic or therapeutic procedures.