

ADCY6 Antibody

Subcategory: Rabbit Polyclonal Antibody

Cat. No.: 252002

Unit: 0.1 mg

Description:

Adenylate cyclase type 6 (ADCY6) is membrane-bound, calcium-inhibitable adenylyl cyclase by calcium concentrations in the submicromolar range. ADCY6 catalyzes the following reaction: ATP = 3',5'-cyclic AMP + diphosphate.

Isotype: Rabbit Ig

Applications: E, WB

Species Reactivity: H

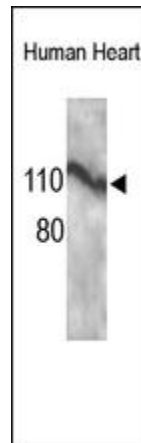
Format: Each vial contains 0.1 mL of crude serum with 0.09% sodium azide.

Alternate Names: Adenylate cyclase type 6; Adenylate cyclase type VI; ATP pyrophosphate-lyase 6; Adenylyl cyclase 6; Ca(2+)-inhibitable adenylyl cyclase; ADCY6; KIAA0422

Accession No.: O43306

Antigen: KLH-conjugated synthetic peptide encompassing a sequence within the N-term region of human ADCY6.

Application Notes: E: 1:10,000-1:50,000; WB: 1:100-1:500



The ADCY6 Antibody is used in Western blot to detect ADCY6 in human fetal heart tissue.

Storage: Store at -20°C. Minimize freeze-thaw cycles. Product is guaranteed one year from the date of shipment.

For research use only, not for diagnostic or therapeutic procedures.