

ADAMTSL-1 Antibody

Subcategory: Rabbit Polyclonal Antibody

Cat. No.: 251982

Unit: 0.1 mg

Description:

ADAMTS-like protein 1 (ADAMTSL-1) is a secreted molecule resembling members of the ADAMTS family of proteases. Punctin lacks the pro-metalloprotease and the disintegrin-like domain typical of this family but contains other ADAMTS domains in precise order including four thrombospondin type I repeats. In transfected COS-1 cells, ADAMTSL-1 is deposited in the cell substratum in a punctate fashion and is excluded from focal contacts. ADAMTSL-1 is a member of ADAMTS-like proteins that have important functions in the extracellular matrix.

Isotype: Rabbit Ig

Applications: E, WB

Species Reactivity: H

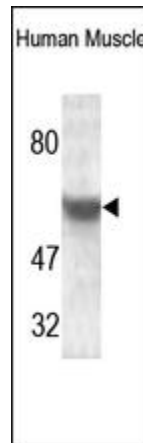
Format: Each vial contains 0.1 mL of crude serum with 0.09% sodium azide.

Alternate Names: ADAMTS-like protein 1; ADAMTSL-1; Punctin-1; ADAMTSL1; ADAMTSR1

Accession No.: Q8N6G6

Antigen: KLH-conjugated synthetic peptide encompassing a sequence within the C-term region of human ADAMTSL-1 .

Application Notes: E: 1:10,000-1:50,000; WB: 1:1,000-1:2,000



The ADAMTSL-1 Antibody is used in Western blot to detect ADAMTSL-1 in human fetal skeletal muscle lysates.

Storage: Store at -20°C. Minimize freeze-thaw cycles. Product is guaranteed one year from the date of shipment.

For research use only, not for diagnostic or therapeutic procedures.