

## ADAM-TS7 Antibody

**Subcategory:** Rabbit Polyclonal Antibody

**Cat. No.:** 251981

**Unit:** 0.1 mg

**Description:**

A disintegrin and metalloproteinase with thrombospondin motifs 7 (ADAM-TS7) is a metalloprotease that plays a role in the degradation of (cartilage oligomeric matrix protein) COMP. ADAM-TS7 is up-regulated in articular cartilage and synovium from arthritis patients.

**Isotype:** Rabbit Ig

**Applications:** E, WB

**Species Reactivity:** H, M, R

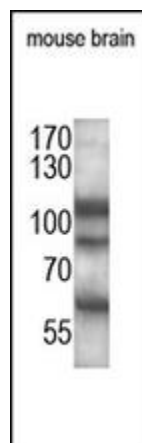
**Format:** Each vial contains 0.1 mL of crude serum with 0.09% sodium azide.

**Alternate Names:** A disintegrin and metalloproteinase with thrombospondin motifs 7; ADAMTS-7; ADAM-TS 7; ADAM-TS7; COMPase; ADAMTS7

**Accession No.:** Q9UKP4

**Antigen:** KLH-conjugated synthetic peptide encompassing a sequence within the C-term region of human ADAM-TS7.

**Application Notes:** E: 1:10,00-1:50,000; WB: 1:500-1:1,000



**The ADAM-TS7 Antibody (Cat. No. 251981) is used in Western blot to detect ADAM-TS7 in mouse brain lysate.**

**Storage:** Store at -20°C. Minimize freeze-thaw cycles. Product is guaranteed one year from the date of shipment.

For research use only, not for diagnostic or therapeutic procedures.