

ADAM-TS1 Antibody

Subcategory: Rabbit Polyclonal Antibody

Cat. No.: 251576

Unit: 0.1 mg

Description:

A disintegrin and metalloproteinase with thrombospondin motifs 1 (ADAM-TS1) cleaves aggrecan, a cartilage proteoglycan. ADAM-TS1 is an active metalloprotease involved in various inflammatory processes and cancer cachexia. ADAM-TS1 cleaves aggrecan at the 1938-Glu-|-Leu-1939 site within the chondroitin sulfate attachment domain.

Isotype: Rabbit Ig

Applications: E, IHC, WB

Species Reactivity: H, M, R

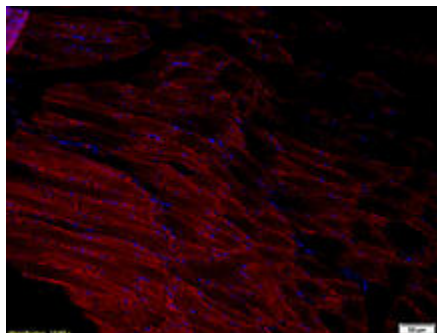
Format: Each vial contains 0.1 mg IgG in 0.1 ml (1 mg/ml) of PBS pH7.4, 25% glycerol, 5 mg/ml BSA with 0.09% sodium azide. Antibody was purified by immunogen affinity chromatography.

Alternate Names: ADAM-TS1; METH1; A disintegrin and metalloproteinase with thrombospondin motifs 1; ADAMTS-1; ADAM-TS 1; ADAMTS1

Accession No.: Q9UHI8

Antigen: KLH-conjugated synthetic peptide encompassing a sequence within the C-term region of mouse ADAM-TS1.

Application Notes: E: 1:500-1:1,000; WB: 1:100-1:500; IHC: 1:100-1:500



ADAM-TS1 staining in rat tongue: Formalin-fixed paraffin-embedded rat tongue muscle tissue is stained with ADAM-TS1 Antibody (Cat. No. 251576) used at 1:200 dilution.

Storage: Store at -20°C. Minimize freeze-thaw cycles. Product is guaranteed one year from the date of shipment.

For research use only, not for diagnostic or therapeutic procedures.