

ADAM 33 Antibody

Subcategory: Rabbit Polyclonal Antibody

Cat. No.: 252001

Unit: 0.1 mg

Description:

Disintegrin and metalloproteinase domain-containing protein 33 (ADAM 33) is a single-pass type I membrane protein expressed in all tissues, except liver, with high expression in placenta, lung, spleen and veins. The conserved cysteine present in the cysteine-switch motif binds the catalytic zinc ion, thus inhibiting ADAM 33. The dissociation of the cysteine from the zinc ion upon the activation-peptide release activates ADAM 33. Genetic variations in ADAM33 are associated with susceptibility to asthma, the most common chronic disease affecting children and young adults. It is a complex genetic disorder with a heterogeneous phenotype, largely attributed to the interactions among many genes and between these genes and the environment. It is characterized by recurrent attacks of paroxysmal dyspnea, with weezing due to spasmodic contraction of the bronchi.

Isotype: Rabbit Ig

Applications: E, WB

Species Reactivity: H

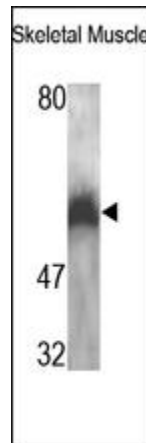
Format: Each vial contains 0.1 mL of crude serum with 0.09% sodium azide.

Alternate Names: Disintegrin and metalloproteinase domain-containing protein 33; ADAM 33; ADAM33; C20orf153

Accession No.: Q9BZ11

Antigen: KLH-conjugated synthetic peptide encompassing a sequence within the C-term region of human ADAM 33.

Application Notes: E: 1:10,000-1:50,000; WB: 1:200-1:1,000



The ADAM 33 Antibody is used in Western blot to detect ADAM 33 in human fetal skeletal muscle lysates.

Storage: Store at -20°C. Minimize freeze-thaw cycles. Product is guaranteed one year from the date of shipment.

For research use only, not for diagnostic or therapeutic procedures.