

ADAM 29 Antibody

Subcategory: Rabbit Polyclonal Antibody

Cat. No.: 252000

Unit: 0.1 mg

Description:

Disintegrin and metalloproteinase domain-containing protein 29 (ADAM 29) is involved in spermatogenesis and fertilization. ADAM 29 is a non catalytic metalloprotease-like protein. ADAM 29 message was shown to be elevated in chronic lymphocytic leukemia (CLL), and is thought to be a useful marker for CLL.

Isotype: Rabbit Ig

Applications: E, WB

Species Reactivity: H

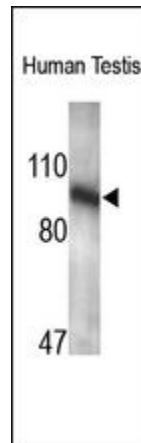
Format: Each vial contains 0.1 mL of crude serum with 0.09% sodium azide.

Alternate Names: Disintegrin and metalloproteinase domain-containing protein 29; ADAM 29; Cancer/testin antigen 73; CT73; ADAM29

Accession No.: Q9UKF5

Antigen: KLH-conjugated synthetic peptide encompassing a sequence within the C-term region of human ADAM 29.

Application Notes: E: 1:10,000-1:50,000; WB: 1:500-1:1,000



The ADAM 29 Antibody is used in Western blot to detect ADAM 29 in human fetal testis lysates.

Storage: Store at -20°C. Minimize freeze-thaw cycles. Product is guaranteed one year from the date of shipment.

For research use only, not for diagnostic or therapeutic procedures.