

## ADAM 15 Antibody

**Subcategory:** Rabbit Polyclonal Antibody

**Cat. No.:** 251996

**Unit:** 0.1 mg

**Description:**

Disintegrin and metalloproteinase domain-containing protein 15 (ADAM 15) is a metalloproteinase with gelatinolytic and collagenolytic activity. ADAM 15 plays a role in the wound healing process, mediating both heterotypic intraepithelial cell/T-cell interactions and homotypic T-cell aggregation. ADAM 15 inhibits beta-1 integrin-mediated cell adhesion and migration of airway smooth muscle cells. ADAM 15 suppresses cell motility towards fibronectin by driving alpha-v/beta-1 integrin (ITAGV-ITGB1) cell surface expression via ERK1/2 inactivation. ADAM 15 cleaves E-cadherin in response to growth factor deprivation.

**Isotype:** Rabbit Ig

**Applications:** E, WB, IHC

**Species Reactivity:** H

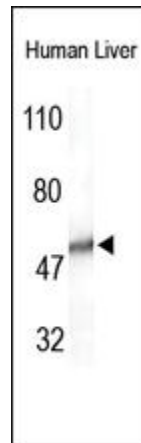
**Format:** Each vial contains 0.1 mg IgG in 0.1 ml (1 mg/ml) of PBS pH7.4, 0.2% BSA with 0.09% sodium azide. Antibody was purified by immunogen affinity chromatography.

**Alternate Names:** Disintegrin and metalloproteinase domain-containing protein 15; ADAM 15; Metalloproteinase-like, distegrin-like, and cysteine-rich protein 15; MDC-15; Metalloprotease RGD disintegrin protein; Metargidin; ADAM15; MDC15

**Accession No.:** Q13444

**Antigen:** KLH-conjugated synthetic peptide encompassing a sequence within the C-term region of human ADAM 15.

**Application Notes:** E: 1:10,000-1:50,000; WB: 1:200-1:1,000; IHC: 1:100-1:500



**The ADAM 15 Antibody is used in Western blot to detect ADAM 15 in human fetal liver lysates.**

**Storage:** Store at -20°C. Minimize freeze-thaw cycles. Product is guaranteed one year from the date of shipment.

For research use only, not for diagnostic or therapeutic procedures.