

Activated Protein C Antibody

Subcategory: Rabbit Polyclonal Antibody

Cat. No.: 251142

Unit: 0.1 mg

Description:

Activated protein C is a vitamin K-dependent serine protease that regulates blood coagulation by inactivating factors Va and VIIIa in the presence of calcium ions and phospholipids. Defects in activated protein C are the cause of protein C deficiency autosomal dominant (ADPROCD) disorder. ADPROCD is a cause of hereditary thrombophilia, a hemostatic disorder characterized by impaired regulation of blood coagulation and a tendency to recurrent venous thrombosis.

Isotype: Rabbit Ig

Applications: E, IHC, WB

Species Reactivity: B, Ck, D, H, M, P, R

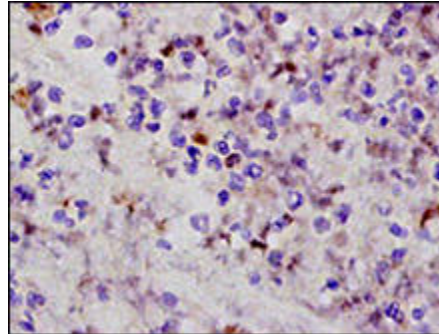
Format: Each vial contains 0.1 mg IgG in 0.1 ml (1 mg/ml) of PBS pH7.4 with 0.09% sodium azide. Antibody was purified by Protein-G affinity chromatography.

Alternate Names: Activated Protein C; Protein C; APC; Anticoagulant protein C; Autoprothrombin IIA; Blood coagulation factor XIV

Accession No.: NP_000303

Antigen: KLH-conjugated synthetic peptide encompassing a sequence within the C-term region of human activated protein C.

Application Notes: E: 1:500-1:1,000; WB: 1:100-1:500; IHC: 1:100-1:500



APC staining in brain. Formalin-fixed paraffin-embedded human brain glioma tissue is stained with Activated Protein C Antibody (Cat. No. 251142) used at 1:200 dilution (DAB staining).

Storage: Store at -20°C. Minimize freeze-thaw cycles. Product is guaranteed one year from the date of shipment.

For research use only, not for diagnostic or therapeutic procedures.