

ACE2 Antibody

Subcategory: Rabbit Polyclonal Antibody

Cat. No.: 251380

Unit: 0.1 mg

Description:

Angiotensin-converting enzyme 2 (ACE2) is a carboxypeptidase which converts angiotensin I to angiotensin 1-9, a peptide of unknown function, and angiotensin II to angiotensin 1-7, a vasodilator. ACE2 is also hydrolyzes apelin-13 and dynorphin-13 with high efficiency. There is evidence that ACE2 is a receptor for the spike glycoprotein of coronaviruses.

Isotype: Rabbit Ig

Applications: E, IHC, WB

Species Reactivity: H, M, R

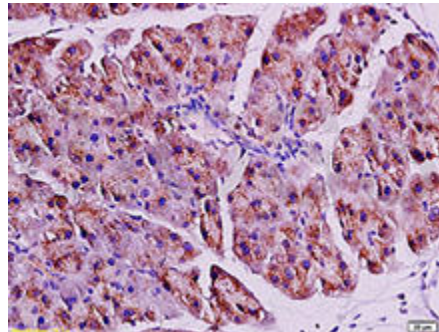
Format: Each vial contains 0.1 mg IgG in 0.1 ml (1 mg/ml) of PBS pH7.4, 0.5 % BSA with 0.09% sodium azide. Antibody was purified by immunogen-affinity chromatography.

Alternate Names: ACE2 ; ACE-2; Testis-specific isoform precursor-2; Angiotensin-converting enzyme 2; ACE-related carboxypeptidase; Angiotensin-converting enzyme homolog; ACEH; Metalloprotease MPROT15

Accession No.: Q9BYF1

Antigen: KLH-conjugated synthetic peptide encompassing a sequence within the N-term region of human ACE2 .

Application Notes: E: 1:500-1:1,000; WB: 1:100-1:500; IHC: 1:100-1:500



ACE2 staining in rat pancreas. Formalin-fixed paraffin-embedded rat pancreas is stained with ACE2 Antibody (Cat. No. 251380) used at 1:200 dilution.

Storage: Store at -20°C. Minimize freeze-thaw cycles. Product is guaranteed one year from the date of shipment.

For research use only, not for diagnostic or therapeutic procedures.