

Abi-1 Antibody

Subcategory: Rabbit Polyclonal Antibody

Cat. No.: 251822

Unit: 0.1 mg

Description:

Abelson interactor 1 (Abi-1) negatively regulates cell growth and transformation by interacting with nonreceptor tyrosine kinases ABL1 and/or ABL2. Abi-1 plays a role in regulation of EGF-induced Erk pathway activation. Abi-1 is involved in cytoskeletal reorganization and EGFR signaling, and together with EPS8 participates in transduction of signals from Ras to Rac. A chromosomal aberration involving Abi-1 is a cause of acute leukemias.

Isotype: Rabbit Ig

Applications: E, WB, IHC, ICC

Species Reactivity: H, M, R

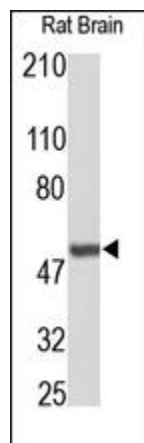
Format: Each vial contains 0.1 mg IgG in 0.1 ml (1 mg/ml) of PBS pH7.4, 5% BSA with 0.09% sodium azide. Antibody was purified by immunogen affinity chromatography.

Alternate Names: Abl interactor 1; Abelson interactor 1; Abi-1; Spectrin SH3 domain-binding protein 1; Eps8 SH3 domain-binding protein; Eps8-binding protein; e3B1; Nap1-binding protein; Nap1BP; Abl-binding protein 4; AbIBP4; ABI1; SSH3BP1

Accession No.: Q8IZP0

Antigen: KLH-conjugated synthetic peptide encompassing a sequence within the C-term region of human Abi-1.

Application Notes: E: 1:500-1:1,000; WB: 1:100-1:500; IHC: 1:100-1:500; ICC: 1:100-1:500



Abi-1 staining in rat brain. Paraffin-embedded rat brain is stained with Abi-1 Antibody (Cat. No. 251822) used at 1:200 dilution.

Storage: Store at -20°C. Minimize freeze-thaw cycles. Product is guaranteed one year from the date of shipment.

For research use only, not for diagnostic or therapeutic procedures.