

ABCG8 Antibody

Subcategory: Rabbit Polyclonal Antibody

Cat. No.: 251985

Unit: 0.1 mg

Description:

ATP-binding cassette sub-family G member 8 (ABCG8) is a transporter that plays an indispensable role in the selective transport of the dietary cholesterol in and out of the enterocytes and in the selective sterol excretion by the liver into bile. Genetic variations in ABCG8 can be associated with susceptibility to gallbladder disease type 4 (GBD4). Defects in ABCG8 are also a cause of sitosterolemia (SITOST), also known as phytosterolemia or shellfish sterolemia. It is a rare autosomal recessive disorder characterized by increased intestinal absorption of all sterols including cholesterol, plant and shellfish sterols, and decreased biliary excretion of dietary sterols into bile.

Isotype: Rabbit Ig

Applications: E, WB

Species Reactivity: H

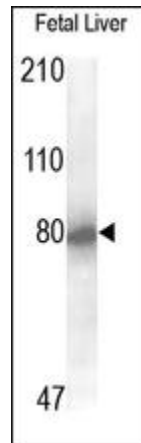
Format: Each vial contains 0.1 mg IgG in 0.1 ml (1 mg/ml) of PBS pH7.4 with 0.09% sodium azide. Antibody was purified by Protein-G affinity chromatography.

Alternate Names: ATP-binding cassette sub-family G member 8; Sterolin-2; ABCG8

Accession No.: Q9H221

Antigen: KLH-conjugated synthetic peptide encompassing a sequence within human ABCG8.

Application Notes: E: 1:1,1000-1:50,000; WB: 1:1,000-1:2,000



The ABCG8 Antibody is used in Western blot to detect ABCG8 in human fetal liver lysates.

Storage: Store at -20°C. Minimize freeze-thaw cycles. Product is guaranteed one year from the date of shipment.

For research use only, not for diagnostic or therapeutic procedures.