

ABCE1 Antibody

Subcategory: Rabbit Polyclonal Antibody

Cat. No.: 251984

Unit: 0.1 mg

Description:

ATP-binding cassette sub-family E member 1 (ABCE1) antagonizes the binding of 2-5A (5'-phosphorylated 2',5'-linked oligoadenylates) by RNase L through direct interaction with RNase L and therefore inhibits its endoribonuclease activity. ABCE1 plays a central role in the regulation of mRNA turnover. ABCE1 antagonizes the anti-viral effect of the interferon-regulated 2-5A/RNase L pathway, and acts as a chaperone for post-translational events during HIV-1 capsid assembly.

Isotype: Rabbit Ig

Applications: E, WB

Species Reactivity: H

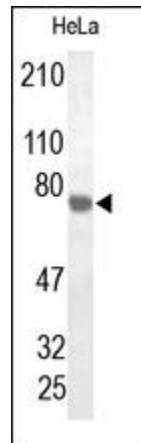
Format: Each vial contains 0.1 mg IgG in 0.1 ml (1 mg/ml) of PBS pH7.4 with 0.09% sodium azide. Antibody was purified by Protein-G affinity chromatography.

Alternate Names: ATP-binding cassette sub-family E member 1; RNase L inhibitor; Ribonuclease 4 inhibitor; RNS4I; 2'-5'-oligoadenylate-binding protein; HuHP68; ABCE1; RLI; RNASEL1; RNASELI; RNS4I

Accession No.: P61221

Antigen: KLH-conjugated synthetic peptide encompassing a sequence within the C-term region of human ABCE1.

Application Notes: E: 1:10,000-1:50,000; WB: 1:1,000-1:2,000



The ABCE1 Antibody is used in Western blot to detect ABCE1 in HeLa cell lysates.

Storage: Store at -20°C. Minimize freeze-thaw cycles. Product is guaranteed one year from the date of shipment.

For research use only, not for diagnostic or therapeutic procedures.