

AAT (2B12) Antibody

Subcategory: Mouse Monoclonal Antibody

Cat. No.: 252890

Unit: 0.1 ml

Description:

AAT (Alpha-1-antitrypsin) is an inhibitor of serine proteases. Although AAT's primary target is elastase, the enzyme has also a moderate affinity for plasmin and thrombin. AAT inhibits trypsin, chymotrypsin and plasminogen activator. The aberrant form inhibits insulin-induced NO synthesis in platelets, decreases coagulation time and has proteolytic activity against insulin and plasmin. AAT deficiency is related to emphysema and liver disease.

Isotype: Mouse IgG1

Applications: E, WB

Species Reactivity: H, M

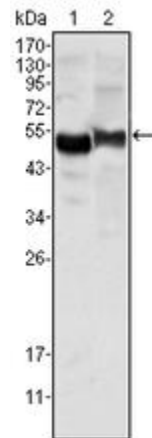
Format: Each vial contains 0.1 ml ascitic fluid with 0.03% sodium azide.

Alternate Names: Alpha-1-antitrypsin; Alpha-1 protease inhibitor; Alpha-1-antiproteinase; SERPINA1; AAT; PI

Accession No.: P01009

Antigen: Purified recombinant fragment of human AAT expressed in E. coli.

Application Notes: E: 1:10000; WB: 1:500-1:2000



The AAT (2B12) Antibody (Cat. No. 252890) is used in Western blot to detect AAT in human plasma (1) and NIH-3T3 cell lysate (2).

Storage: Store at 4°C for short term use only. Store at -20°C for storage over 1 month. Product is guaranteed 6 months from the date of shipment.

For research use only, not for diagnostic or therapeutic procedures.